

A massive calcified left ventricular aneurysm

Masif kalsifikasyon içeren sol ventrikül anevrizması

Tolga Demir,¹ Hüsnü Sezer,¹ Mazlum Şahin,¹ Selma Sezer,² Sibel Kuzucan²

Departments of ¹Cardiovascular Surgery, ²Anesthesiology and Reanimation, Beylikdüzü Kolan Hospital, İstanbul, Turkey

A 60-year-old woman presented with chest pain and dyspnea, and her medical history included an anterior myocardial infarction eight years earlier. An electrocardiogram revealed ST-segment elevation with associated Q-waves in the V1, V2, II, III and aVF leads. The transthoracic echocardiography showed a hyper-reflective calcified apical aneurysm. The patient's end diastolic volume was 186 mL, and she had an ejection fraction of 38%. Subsequent coronary angiography revealed a total occlusion of the left anterior descending artery and the mid-portion of the right coronary artery as well as critical stenosis of the circumflex coronary artery. A oval-shaped calcified structure that resembled a calcified apical left ventricular aneurysm was observed during the left main artery (Figure 1a) and right coronary artery injections (Figure 1b). The patient then underwent an uneventful quadruple myocardial revascularization operation that included the resection of the calcified aneurysm (Figure 2a) and the reconstruction of the left ventricular wall via endoventricular patch plasty, which was previously described by Cooley.^[1] The excised tissue was identified as a massive, calcified, semi-oval sphere measuring 4.5x4 cm (Figure 2b).

Left ventricular aneurysms occur as a serious complication of transmural myocardial infarction, but massive calcified ventricular aneurysms are seen much less frequently.^[2-4] However, as our case points out, the possibility of these types of aneurysms should not be overlooked.

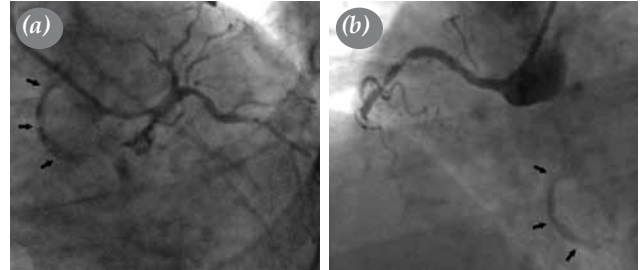


Figure 1. (a) Coronary angiographic images showing the total occlusion of the proximal left anterior descending artery and (b) the mid-portion of the right coronary artery as well as an oval-shaped calcified structure (arrows) related to a calcified left ventricular aneurysm.

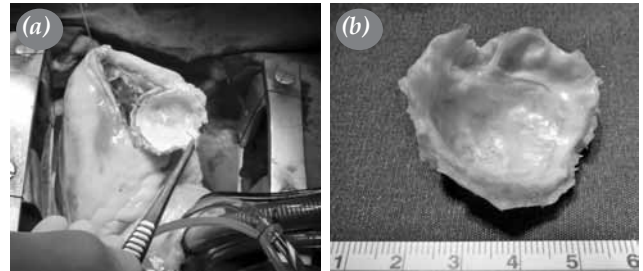


Figure 2. (a) Resection of the calcified left ventricular aneurysm and (b) the excised massive calcified tissue.

Declaration of conflicting interests

The authors declared no conflicts of interest with respect to the authorship and/or publication of this article.



Available online at
www.tgkdc.dergisi.org
doi: 10.5606/tgkdc.dergisi.2014.9896
QR (Quick Response) Code

Received: January 25, 2014 Accepted: May 05, 2014

Correspondence: Tolga Demir, M.D. Beylikdüzü Kolan Hastanesi Kalp ve Damar Cerrahisi Kliniği, 34528 Gürpınar, Beylikdüzü, İstanbul, Turkey.

Tel: +90 532 - 749 13 19 e-mail: dr.tolgademir@gmail.com

Funding

The authors received no financial support for the research and/or authorship of this article.

REFERENCES

1. Cooley DA. Ventricular endoaneurysmorrhaphy: results of an improved method of repair. *Tex Heart Inst J* 1989;16:72-5.
2. Aras D, Topaloglu S, Demirkan B, Deveci B, Ozeke O, Korkmaz S. Porcelain heart: a case of massive myocardial calcification. *Int J Cardiovasc Imaging* 2006;22:123-6.
3. Wang X, Wu H, Sun H. Massive calcified left ventricular aneurysm and ventricular septum: successful surgical repair and reconstruction. *J Thorac Cardiovasc Surg* 2012;143:509-11.
4. Haberal I, Ozsoy D, Cetin G, Mert M. Extensively calcified left ventricular aneurysm. *J Card Surg* 2013;28:699-700.