

Clinical, imaging and hemodynamic correlates and prognostic impact of syncope in acute pulmonary embolism: A single-center study

Akut pulmoner embolide senkopun klinik, görüntüleme ve hemodinamik korelasyonları ve prognostik etkisi: Tek merkezli bir çalışma

Berhan Keskin¹, Hacer Ceren Tokgöz¹, Özgür Yaşar Akbal¹, Aykun Hakgör², Ali Karagöz¹, Barkın Kültürsay¹, Seda Tanyeri¹, Seyhmuş Külahçioğlu¹, İbrahim Halil Tanboğa³, Nihal Özdemir¹, Cihangir Kaymaz¹

Institution where the research was done:

Kartal Koşuyolu High Specialization Training and Research Hospital, İstanbul, Türkiye

Author Affiliations:

¹Department of Cardiology, University of Health Sciences, Kartal Koşuyolu High Specialization Training and Research Hospital, İstanbul, Türkiye

²Department of Cardiology, Medipol Mega University Hospital, İstanbul, Türkiye

³Department of Cardiology, Nişantaşı University, Hisar Hospital, İstanbul, Türkiye

ABSTRACT

Background: We aimed to determine the clinical, echocardiographic and hemodynamic correlates of syncope as a presenting symptom in pulmonary embolism and its impact on in-hospital and long-term outcomes.

Methods: Between July 2012 and October 2019, a total of 641 patients with PE (277 males, 364 females; median age: 65 years; range, 51 to 74 years) in whom the diagnostic work-up and risk-based management were performed according to the current pulmonary embolism guidelines were retrospectively analyzed. Clinical, laboratory and imaging data of the patients were obtained from hospital database system.

Results: Syncope was noted in 193 (30.2%) of patients on admission, and was associated with a significantly higher-risk status manifested by elevated troponin and D-dimer levels, a higher Pulmonary Embolism Severity Index scores, deterioration of right-to-left ventricular diameter ratio, right ventricular longitudinal contraction measures, the higher Qanadli score, and higher rates of thrombolytic therapies ($p<0.001$) and rheolytic-thrombectomy ($p=0.037$) therapies. In-hospital mortality ($p=0.007$) and minor bleeding ($p<0.001$) were significantly higher in syncope subgroup. Multivariate logistic regression analysis showed that higher Pulmonary Embolism Severity Index scores and right-to-left ventricular diameter ratio were independently associated with syncope, while aging and increased heart rate predicted in-hospital mortality. Malignancy and right-to-left ventricular diameter ratio at discharge, but not syncope, were independent predictors of cumulative mortality during follow-up.

Conclusion: Syncope as the presenting symptom is associated with a higher risk due to more severe obstructive pressure load and right ventricular dysfunction requiring more proactive strategies in patients with pulmonary embolism. However, with appropriate risk-based therapies, neither in-hospital mortality nor long-term mortality can be predicted by syncope.

Keywords: Acute pulmonary embolism, mortality, risk prediction, syncope.

ÖZ

Amaç: Bu çalışmada pulmoner embolide başvuru anında senkopun klinik, ekokardiyografik ve hemodinamik korelasyonları ve hastane içi ve uzun dönem sonuçlar üzerindeki etkisi incelendi.

Çalışma planı: Temmuz 2012-Ekim 2019 tarihleri arasında tanı testleri ve risk esaslı tedavisi mevcut pulmoner emboli kılavuzlarına göre yapılan toplam 641 pulmoner emboli hastası (277 erkek, 364 kadın; ort. yaş: 65 yıl; dağılım, 51-74 yıl) retrospektif olarak incelendi. Hastaların klinik, laboratuvar ve görüntüleme verileri hastane veri tabanı sisteminden elde edildi.

Bulgular: Başvuru anında hastaların 193'ünde (%30.2) senkop belirlendi ve artmış troponin ve D-dimer düzeyleri, yüksek Pulmoner Emboli Şiddet İndeks skorları, sağ-sol ventrikül çapı oranında ve sağ ventrikülün uzunlaşmasına kontraksiyon ölçümlerinde kötüleşme, yüksek Qanadli skoru ve yüksek trombolitik tedavi ($p<0.001$) ve reolitik-trombektomi tedavi ($p=0.037$) oranları ile belirlendiği üzere anlamlı düzeyde daha yüksek risk durumu ile ilişkili bulundu. Hastane içi mortalitesi ($p=0.007$) ve minör kanama ($p<0.001$) senkop alt grubunda anlamlı düzeyde daha yüksek idi. Çok değişkenli lojistik regresyon analizinde, yüksek Pulmoner Emboli Şiddet İndeks skorları ve sağ-sol ventrikül çapı oranı senkop ile bağımsız düzeyde ilişkili bulunurken, yaşlanma ve artmış kalp hızı hastane içi mortalitesinin öngördürücüsüydü. Senkop değil fakat malignite ve taburculuk anında sağ-sol ventrikül çapı oranı, takip süresince toplam mortalitenin bağımsız öngördürücüleri idi.

Sonuç: Başvuru semptomu olarak senkop, pulmoner embolide daha proaktif stratejiler gerektiren daha şiddetli tkayıcı basınç yüküne ve sağ ventrikül disfonksiyonuna bağlı daha yüksek risk ile ilişkilidir. Ancak, riske göre uygun tedaviler uygulandığında ne hastane-ichi mortalite ne de uzun dönem mortalite senkop tarafından öngörülebilmetedir.

Anahtar sözcükler: Akut pulmoner emboli, mortalite, risk tahmini, senkop.

Received: September 27, 2021 Accepted: January 28, 2022 Published online: July 29, 2022

Correspondence: Berhan Keskin, MD. SBÜ, Kartal Koşuyolu Yüksek İhtisas Eğitim ve Araştırma Hastanesi, Kardiyoloji Kliniği, 34865 Kartal, İstanbul, Türkiye.
Tel: +90 216 - 500 15 00 e-mail: bekeskin@ku.edu.tr

Cite this article as:

Keskin B, Ceren Tokgöz H, Akbal ÖY, Hakgör A, Karagöz A, Kültürsay B, et al. Clinical, imaging and hemodynamic correlates and prognostic impact of syncope in acute pulmonary embolism: A single-center study. Turk Gogus Kalp Dama 2022;30(3):317-326

©2022 All right reserved by the Turkish Society of Cardiovascular Surgery.

This is an open access article under the terms of the Creative Commons Attribution-NonCommercial License, which permits use, distribution and reproduction in any medium, provided the original work is properly cited and is not used for commercial purposes (<http://creativecommons.org/licenses/by-nc/4.0/>).

Acute pulmonary embolism (PE) has been considered among the most important world-wide cardiovascular diseases, resulting in morbidity and mortality. Risk stratification algorithm recommended by the currently available European Society of Cardiology (ESC) PE Guidelines is based on hemodynamic status and clinical characteristics at initial assessment, right ventricular (RV) dysfunction presence as assessed by echocardiography or computed tomographic pulmonary angiography (CTPA), and elevated cardiac biomarkers indicating RV strain and myocardial injury.^[1,2]

Syncope has been documented as a presenting manifestation in approximately 25% of patients with PE.^[3-6] Although current guidelines emphasize the importance of this presentation in risk-based in-hospital management algorithms of PE, as a result of the uncertainties regarding the prognostic impact of syncope on the early clinical course in this setting, only two out of currently available 20 risk prediction models have included the presence of syncope.^[7,8] A systematic review and meta-analysis on PE series revealed that syncope was associated with a higher risk for hemodynamic deterioration and RV dysfunction on admission, and early PE-related adverse events. However, this increased risk of early mortality seemed to be more pronounced in studies consist of unselected patients, but not in those comprising normotensive subjects only.^[8] Therefore, the mechanisms of the syncope in hemodynamically stable and unstable patients may be different, and these results raise the question whether syncope itself may represent the independent prediction for in-hospital outcome.^[8]

In the present study, we aimed to evaluate clinical, echocardiographic, and hemodynamic correlates of syncope presence in patients with PE and to assess whether it had a prognostic impact on the in-hospital and long-term outcomes.

PATIENTS AND METHODS

This single-center, retrospective study was conducted at the Department of Cardiology, Kartal Koşuyolu Heart and Research Hospital between July 2012 and October 2019. A total of 641 patients with PE (277 males, 364 females; median age: 65 years; range, 51 to 74 years) in whom the diagnosis was confirmed and risk-based management strategies were decided following the admission to emergency department of our center were included. All consecutive patients with PE who were diagnosed based on CTPA and hospitalized were included. In accordance with the

2014 and 2019 ESC PE Guidelines, a systematic work-up with CTPA, echocardiography, biomarkers, and PE severity indexes was routinely performed for risk-based management strategies.

The CTPA images were acquired at the time of admission and discharge using a 64-slice-helical computed tomography (CT) scanner (Toshiba Aquilion 64™, Toshiba Medical Systems Corp., Tokyo, Japan) and the images recorded at the time of diagnosis and discharge. A validated CT score for pulmonary artery (PA) occlusion suggested by Qanadli et al.^[9] (Qanadli score, QS), RV to left-ventricle ratio (RV/LVr), right-atrial to left-atrial diameter ratio (RA/LAr) and main, left and right PA diameters were measured from CTPA images.

We retrospectively analyzed the prospectively collected pre-existing data set of PE patients who were admitted to the emergency service. The data set consists of prospectively obtained data of patients presented to emergency service with PE, including baseline characteristics, laboratory parameters, CTPA, and echocardiographic measurements were obtained from hospital database system. Patients without imaging evidence of PE were excluded.

According to the 2009 and 2018 ESC guidelines, syncope is defined as transient loss of consciousness due to brief global cerebral hypoperfusion.^[10,11] We defined PE-related syncope, if syncope occurred during PE-related symptoms are present. Patients with a suspicion of traumatic syncope underwent to cranial CT to exclude intracranial events.

Troponin-T levels were measured to diagnose myocardial injury. According to the ESC guidelines, systolic blood pressure (SBP) less than 90 mmHg at initial presentation or a decline in SBP more than 40 mmHg and lasting longer than 15 min, were the parameters to define the high-risk status.^[1,2] Laboratory results, imaging data and in-hospital outcome status were retrieved from the hospital database.

Data about long-term mortality were obtained from the national healthcare database and telephone visits in January 2020 and the accessible data referred to all-cause mortality. Therapies implemented to patients were documented, including intravenous fibrinolytics, catheter-directed treatments and anticoagulants. Major or minor bleeding events during hospitalization were also recorded.

Statistical analysis

Statistical analysis was performed using the R version 4.01 software (R Foundation for Statistical Computing, Vienna, Austria) with “rms” “survival”, “survminer”,

“ggdag” and “ggplot2” packages. Continuous data were presented in median and 25th-75th interquartile range (IQR), while categorical data were presented in number and frequency. The Mann-Whitney U test

was used for the continuous data comparisons and Pearson chi-square or Fisher exact tests were used for categorical data comparison. A two-tailed *p* value of <0.05 was considered statistically significant.

Table 1. Clinical characteristics of patients with pulmonary embolism on admission according to the presence or absence of syncope as presenting finding

Variables	Syncope absent (n=448)				Syncope present (n=193)				<i>p</i>
	n	%	Median	IQR	n	%	Median	IQR	
Age (year)			64	51-75			66	51-74	0.787
Sex									
Female	251	56.02			113	58.54			0.373
Hypertension	158	35.26			71	36.78			0.835
Coronary artery disease	49	10.9			17	8.8			0.285
Hyperlipidemia	32	7.14			9	4.66			0.169
Diabetes mellitus	66	14.73			40	20.72			0.123
Congestive heart failure	11	2.45			2	1.03			0.206
Smoking history	39	8.7			26	13.47			0.115
Chronic obstructive pulmonary disease	29	6.47			12	6.21			0.750
Stroke history	21	4.68			18	9.32			0.041
Oral contraceptive use	10	2.23			3	1.55			0.509
Atrial fibrillation	25	5.58			16	8.29			0.280
Long-haul travel history	24	5.35			11	5.69			0.993
Acute deep vein thrombosis	254	56.69			94	48.70			0.086
Prior venous thromboembolism	50	11.16			11	5.69			0.032
Malignancy	65	14.50			33	17.09			0.342
Postoperative status	148	33.03			65	33.67			0.732
Symptom duration			4	3-7			2	1-5	<0.001
SPO ₂ (%)*			90	87-93			88	85-92	<0.001
SBP (mmHg)*			122	110-138			113	93-130	<0.001
Heart rate (bpm)*			104	91-115			114	100-122	<0.001
PESI Class									<0.001
3	109	24.60			41	21.24			
4	80	17.85			39	20.20			
5	92	20.53			79	20.20			
PESI score			95	73-119			118	93-147	<0.001
sPESI Class									<0.001
0	124	27.67			24	12.43			
1	157	27.67			24	12.43			
2	104	23.1			52	26.94			
3	51	11.38			54	27.27			
4	11	2.45			13	6.73			
5	1	0.22			2	1.03			
Shock index*			0.83	0.68-1			0.96	0.79-1.3	<0.001
Risk status (according to ESC algorithm)									<0.001
Low-risk	78	17.41			13	6.73			
Intermediate-low risk	86	19.19			14	7.25			
Intermediate-high risk	257	57.36			117	60.62			
High risk	27	6.02			49	25.38			

IQR: Interquartile range; * At admission; SpO₂: Blood oxygen saturation; SBP: Systolic blood pressure; bpm: Beats per min; PESI: Pulmonary Embolism Severity Index; sPESI: Simplified Pulmonary Embolism Severity Index; ESC: European Society of Cardiology.

The primary outcome was in-hospital mortality. Secondary outcome was long-term mortality. Syncope before admission was used for primary and secondary outcome. We included following parameters for in-hospital all-cause mortality: age, SBP, heart rate, blood oxygen saturation (SpO₂), echocardiographic PA systolic pressure (PASP), QS, presence of syncope and RV/LVr (at the time of admission). We included following parameters for long-term all-cause mortality: Age, sex, RV/LVr at discharge, syncope, SBP (at the time of admission), heart rate (at the time of admission), SpO₂ (at the time of admission) and QS (at the time of admission), and malignancy. We included SBP Pulmonary Embolism Severity Index (PESI) score, QS, PASP, and RV/LVr at the time of admission for predictors of syncope. Adjustment variables were selected according to the subject matter knowledge and finally we drew a directed acyclic graph to inform regression models.

The in-hospital risk of mortality was assessed using the multivariate logistic regression models. Effects of individual exposure were reported using the odds ratio (OR) and 95% confidence interval (CI). Predictors of syncope were assessed with the multivariate logistic regression models. Effect of individual exposure was reported using OR and 95% CI. All-cause long-term mortality was displayed by using the Kaplan-Meier plot to examine the relationship between syncope groups. The multivariate Cox proportional hazard models were used to assess effect of exposure and confounders on long-term mortality. Effect of individual exposure was reported using the hazard ratio (HR) and 95% CI.

RESULTS

The 193 (30.2%) of 641 PE patients had a history of syncope on admission. Baseline demographic and clinical characteristics are presented in Table 1.

Table 2. Echocardiographic, CT angiographic and laboratory measures in acute pulmonary embolism patients with or without syncope on admission

	Syncope absent (n=448)				Syncope present (n=193)				p
	n	%	Median	IQR	n	%	Median	IQR	
PASP* (mmHg)			50	40-60			55	45-60	0.01
TAPSE* (cm)			1.9	1.6-2.2			1.7	1.4-2	<0.001
RV-St* (cm/sn)			11	10-13			10	8.9-12	0.01
Qanadli score*			20	14-25			24	20-29	<0.001
RV/LV ratio at CT*			1.11	1-1.25			1.25	1.13-1.41	<0.001
RV-diameter at CT* (mm)			42	37.1-46.5			44.5	40.7-48.3	<0.001
RA/LA ratio at CT*			1.18	1.05-1.35			1.32	1.15-1.52	0.004
MPA diameter at CT* (mm)			29.7	27-32.4			30.2	27.5-33	0.063
Pleural effusion*	48	10.71			25	12.95			0.703
Pleural infarct*	49	10.93			29	15.02			0.532
D-dimer (mcg/mL)			7	3.25-13			9.8	4.9-18.9	<0.001
Troponin T (ng/mL)			0.06	0.03-0.25			0.16	0.07-0.39	<0.001
Treatment strategies									
USAT	148	33.03			70	36.26			
Rheolytic thrombectomy	29	6.47			23	11.91			0.037
Intravenous tPA	94	20.98			70	36.15			<0.001
tPA dose (mg)			0	0-40			30	0-50	<0.001
tPA-infusion duration (h)			0	0-24			3	0-24	0.014
Unfractionated heparin or LMWH	446	99.55			192	99.48			0.888

CT: Computed tomography; * At admission; IQR: Interquartile range; PASP: Pulmonary artery systolic pressure; TAPSE: Tricuspid annular plane systolic excursion; RV-St: Right ventricle systolic motion; RV: Right ventricle; LV: Left ventricle; RA: Right atrium; LA: Left atrium; MPA: Main pulmonary artery; USAT: Ultrasound-assisted thrombolysis; tPA: tissue plasminogen activator; LMWH: Low-molecular-weight heparin.

Table 3. Post-treatment clinical, echocardiographic and CT angiographic measures in acute pulmonary embolism patients with or without syncope

	Syncope absent (n=448)				Syncope present (n=193)				p
	n	%	Median	IQR	n	%	Median	IQR	
Pleural effusion*	52	11.60			35	18.1			0.397
Pleural infarct*	45	10.04			29	15.02			0.517
Major bleeding	21	4.68			16	8.29			0.061
Minor bleeding	13	2.90			20	10.36			<0.001
In-hospital mortality	27	6.02			25	12.95			0.007
Long-term mortality	88	19.64			46	23.83			0.159
Systolic blood pressure* (mmHg)			124	114-133			124	112-134	0.470
Heart rate* (bpm)			82	75-91			81	74-90	0.514
SPO ₂ *			95	94-97			94	93-96	0.058
Shock index*			0.67	0.59-0.75			0.66	0.58-0.75	0.764
PASP* (mmHg)			35	30-40			35	30-40	0.460
TAPSE* (cm)			2.3	2-2.5			2.3	2.1-2.5	0.264
RV-St* (cm/sn)			14	12-16			13.8	12-15	0.587
Qanadli score*			9	5-14			8	5-13	0.770
RV/LV ratio at CT*			0.91	0.83-0.97			0.91	0.83-1	0.441
RA/LA ratio at CT*			1.02	0.92-1.21			1	0.92-1.18	0.865
MPA diameter at CT* (mm)			27.3	24.4-30.2			27.3	24.7-30.1	0.687
Hospitalization duration (days)			10	7-13			10	7-14	0.650
Follow-up (days)			770	284-1467			637	233-1098	0.025

CT: Computed tomography; * At discharge; IQR: Interquartile range; SpO₂: Blood oxygen saturation; PASP: Pulmonary artery systolic pressure; TAPSE: Tricuspid annular plane systolic excursion; RV-St: Right ventricle systolic motion; RV: Right ventricle; LV: Left ventricle; RA: Right atrium; LA: Left atrium; MPA: Main pulmonary artery.

Although age, sex, and other demographic characteristics were not associated with syncope, patients presented with syncope demonstrated a higher heart rate, a lower SpO₂ and SBP, a higher risk status (according to PESI score, shock index, ESC risk algorithm) and a shorter symptom duration before admission (p<0.001 for all).

Laboratory measurements, CT angiographic, and echocardiographic parameters on admission are summarized in Table 2. Patients presented with syncope had higher troponin-T and D-dimer levels on admission (p<0.001 for both of them), a lower tricuspid annular plane systolic excursion (TAPSE) (p<0.001) and tricuspid annulus systolic velocity (St) (p=0.01), and a higher PASP (p=0.01) on echocardiography, a higher thrombotic burden as assessed by QS (p<0.001), and a higher RV/LVr (p<0.001) and RA/LAr (p=0.004) on CTPA (Table 2). Furthermore, proactive therapies including intravenous tissue plasminogen activator (tPA)

and rheolytic thrombectomy were more often utilized in patients presented with syncope (p<0.001 and p=0.037, respectively).

Post-treatment differences regarding clinical, echocardiographic, and CTPA findings were also evaluated (Table 3). There were no significant differences at discharge between syncope groups in all terms including hemodynamic variables such as SBP, heart rate, SpO₂ (p=0.470, p=0.514, p=0.058, respectively), TAPSE, St, PASP (p=0.264, p=0.587, and p=0.460, respectively) and CTPA measures of QS, RV/LVr and RA/LAr (p=0.770, p=0.441, and p=0.865, respectively). In-hospital mortality and minor bleeding was more observed in patients presenting with syncope (p=0.007 and p<0.001, respectively), while major bleeding events and long-term mortality were comparable between patients with or without syncope at the time of admission (p=0.06).

Table 4. Predictors of syncope in patients with PE on admission

Variables	Odds ratio	95% CI	<i>p</i>
Systolic blood pressure at admission (mmHg)	0.991	0.981-1.002	0.115
PESI score	1.015	1.008-1.022	<0.001
Qanadli score	1.025	0.989-1.063	0.167
Pulmonary artery systolic pressure at admission (mmHg)	1.004	0.987-1.022	0.578
Right ventricle/left ventricle ratio at CT at admission	7.508	2.401-23.475	<0.001

PE: Pulmonary embolism; CI: Confidence interval; PESI: Pulmonary Embolism Severity Index; CT: Computed tomography; Multivariate logistic regression analysis

Table 5. Predictors of in-hospital mortality in patients with PE

Variables	Odds ratio	95% CI	<i>p</i>
Age (year)	1.035	1.011-1.060	0.004
Systolic blood pressure (mmHg)	0.984	0.967-1.000	0.071
Heart rate (bpm)	1.041	1.018-1.070	<0.001
Blood oxygen saturation (%)	0.961	0.906-1.020	0.186
Pulmonary artery systolic pressure (mmHg)	0.996	0.967-1.030	0.842
Qanadli score	1.046	0.986-1.110	0.132
RV/LV ratio at CT	1.088	0.159-7.430	0.931
Syncopal presence at admission	0.655	0.284-1.520	0.323

PE: Pulmonary embolism; CI: Confidence interval; bpm: Beats per min; RV: Right ventricle; LV: Left ventricle; CT: Computed tomography; Multivariate logistic regression analysis

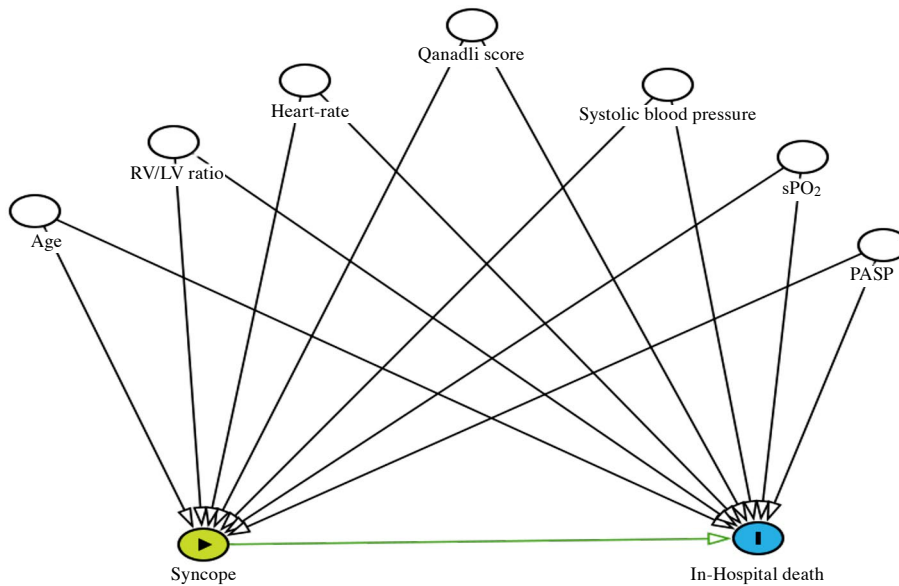


Figure 1. Directed acyclic graph to inform about multivariate logistic regression model (syncope was the main exposure, in-hospital mortality was the primary outcome).

RV: Right ventricle; LV: Left-ventricle; PASP: Pulmonary artery systolic pressure

Table 6. Predictors of long-term mortality in patients with PE

Variables	Odds ratio	95% CI	<i>p</i>
Age (year)	1.309	0.753-2.274	0.338
Sex (female reference)	0.569	0.296-1.094	0.091
RV/LV ratio at CT at discharge	1.414	1.028-1.946	0.033
Syncope presence at admission	0.885	0.426-1.837	0.744
SBP at admission (mmHg)	1.039	0.660-1.638	0.863
Heart rate at admission (bpm)	0.984	0.550-1.761	0.958
Blood oxygen saturation(at admission) (%)	0.676	0.434-1.052	0.083
Malignancy presence	5.261	2.702-10.242	<0.001
Qanadli score at admission	1.006	0.597-1.695	0.980

PE: Pulmonary embolism; CI: Confidence interval; RV: Right ventricle; LV: Left ventricle; CT: Computed tomography; SBP: Systolic blood pressure; bpm: Beats per min; Multivariate logistic regression analysis

In multivariate logistic regression analysis, higher PESI score and higher RV/LVr independently predicted syncope in PE patients (OR: 1.015, 95% CI: 1.008-1.022, $p < 0.001$ and OR: 7.508, 95% CI: 2.401-23.475, $p < 0.001$, respectively). The PAPS, QS and SBP at the time of admission were also included in the model; however, there was not statistically significant association (Table 4).

Age and heart rate (OR: 1.035, 95% CI: 1.011-1.060, $p = 0.004$, and OR: 1.041, 95% CI: 1.018-1.070, $p < 0.001$, respectively), but not syncope (OR: 0.655, 95% CI: 0.284-1.520, $p = 0.323$), were found to be independent predictors for in-hospital mortality (Table 5, Figure 1).

Multivariate Cox proportional regression analysis was used to examine the association between the long-term mortality and mentioned nine candidate predictors (Table 6). Among variables, RV/LVr at

discharge and malignancy were independently associated with long-term mortality (HR: 1.414, 95% CI: 1.02-1.946, $p = 0.033$ and HR: 5.261, 95% CI: 2.702-10.242, $p < 0.001$, respectively) (Figure 2). Kaplan-Meier curve showed no differences in terms of long-term survival probability between the groups (Figure 3).

DISCUSSION

Our single-center data suggest that presence of syncope in PE relates to a higher risk, a more severe PA obstructive burden, a more deteriorated hemodynamic status and RV dysfunction which required more proactive reperfusion strategies.^[11] Mohebbali *et al.*^[12] also demonstrated that syncope was associated with increased RV strain and needed to advanced treatments in PE patients. However, possibly as a result of the appropriate risk-based PE management

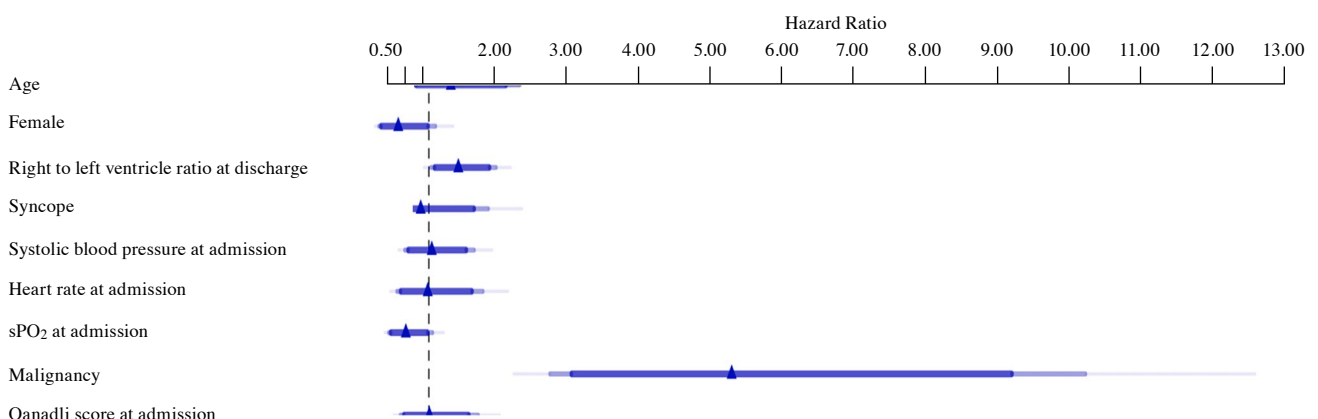


Figure 2. Hazard-ratio plot for long-term mortality.

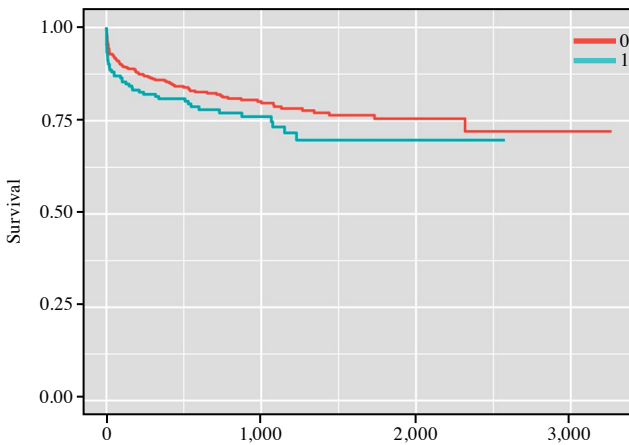


Figure 3. Kaplan-Meier plot for long-term mortality between syncope groups.

strategies, this relationship could not be translated to in-hospital (when adjusted with multivariate analysis) and long-term mortality.

The mechanisms and clinical impact of syncope as an early risk assessment parameter remain to be established. Although PE has been reported in up to 17% of patients with a first episode of syncope not due to other causes, one-fourth of these patients had no clinical signs or symptoms consistent with PE.^[6] A systematic review and meta-analysis based on data from 29 PE studies showed that syncope related to a higher frequency of hemodynamic deterioration and RV dysfunction at presentation, a higher risk of 30-day all-cause cumulative mortality and PE-related adverse outcomes.^[8,13-16] The absolute risk difference (95% CI) for all-cause death was reported to be 6% (1 to 10%) in studies consisting of unselected population, while it had no impact in PE studies restricted to normotensive patients.^[8,17-22] Moreover, the association between syncope and all-cause mortality seems to be stronger than for PE-related mortality. The sensitivity analyses of this meta-analysis showed that the impact of syncope was mostly supported by studies with a lower score at formal quality assessment and by retrospective studies.^[8]

In our univariate analysis, syncope was associated with a shorter symptom-diagnosis interval, a higher risk status manifested by significantly elevated biomarker levels, the higher PE severity indexes, a more severe obstructive burden and RV dysfunction, and the higher utilization rates of thrombolytics and rheolytic thrombectomy as proactive reperfusion therapies.

Surgical outcomes have improved substantially in the past decades and now offer a safe and appropriate treatment option that can reduce the mortality and morbidity associated with acute PE.^[23,24] Surgical pulmonary embolectomy is another alternative in selected patients, with non-surgical approaches remaining the first-line treatment in most cases.^[2,23,24] The presence of thrombolytic and catheter-directed treatment options in our center has led to the primary use of non-surgical treatments. There are no patients undergoing surgical treatment in this study population.

Although, syncope was independently associated with PESI score and RV/LVr, older age and increased heart rates, but not syncope itself, predicted in-hospital mortality. In line with the findings of meta-analysis by Barco et al.,^[8] our results suggest that syncope may be only a surrogate for severity of RV dysfunction and pre-existing comorbidity, rather than an independent prognostic factor.

The present study also demonstrated the independent prognostic impact of RV/LVr at discharge and malignancy for long-term mortality. These results seem to explain the importance of the persistence of asymptomatic RV dysfunction even in the normotensive patients.

This study has some limitations. The retrospective design of this study may be considered as the main limitation. Adequately sized prospective cohort studies may clarify the question whether syncope has an independent prognostic impact beyond the currently available risk criteria. Moreover, a comparison among normotensive, hypotensive and unselected PE populations might provide a comprehensive assessment for prognostic impact of syncope in this setting.

In conclusion, syncope as presenting symptom relates to a higher risk status due to a more severe obstructive burden, pressure load and right ventricular strain requiring more proactive reperfusion strategies in pulmonary embolism patients. However, with appropriate management, syncope predicts neither in-hospital, nor long-term cumulative mortality.

Ethics Committee Approval: The study protocol was approved by the Kartal Koşuyolu Heart and Research Hospital Institutional Ethics Committee (date/no: 20.10.2020/372). The study was conducted in accordance with the principles of the Declaration of Helsinki.

Patient Consent for Publication: A written informed consent was obtained from each patient.

Data Sharing Statement: The data that support the findings of this study are available from the corresponding author upon reasonable request.

Author Contributions: Idea/concept: B.K., A.K., C.K., H.C.T., B.K.; Design: O.Y.A., A.H., B.K., H.C.T.; Control/supervision: C.K., N.O., I.H.T., S.T.; Data collection and interpretation: B.K., B.K., A.H., S.T., S.K., I.H.T.; Literature review: C.K., A.K., B.K., O.Y.A., Writing the article: C.K., B.K., A.K., O.Y.A., Critical review: H.C.T., N.O., I.H.T., S.K.; References and fundings: N.O., S.K. A.H., S.T.

Conflict of Interest: The authors declared no conflicts of interest with respect to the authorship and/or publication of this article.

Funding: The authors received no financial support for the research and/or authorship of this article.

REFERENCES

1. Konstantinides SV, Torbicki A, Agnelli G, Danchin N, Fitzmaurice D, Galiè N, et al. 2014 ESC guidelines on the diagnosis and management of acute pulmonary embolism. *Eur Heart J* 2014;35:3033-69, 3069a-3069k.
2. Konstantinides SV, Meyer G, Becattini C, Bueno H, Geersing GJ, Harjola VP, et al. 2019 ESC Guidelines for the diagnosis and management of acute pulmonary embolism developed in collaboration with the European Respiratory Society (ERS). *Eur Heart J* 2020;41:543-603.
3. Kukla P, McIntyre WF, Koracevic G, Kutlesic-Kurtovic D, Fijorek K, Atanaskovic V, et al. Relation of atrial fibrillation and right-sided cardiac thrombus to outcomes in patients with acute pulmonary embolism. *Am J Cardiol* 2015;115:825-30.
4. Konstantinides S, Geibel A, Olschewski M, Heinrich F, Grosser K, Rauber K, et al. Association between thrombolytic treatment and the prognosis of hemodynamically stable patients with major pulmonary embolism: Results of a multicenter registry. *Circulation* 1997;96:882-8.
5. Goncalves ML, Abreu L, Marmelo B, Gil J, Antunes H, Pires MI, et al. The prognostic value of the clinical presentation with syncope in acute pulmonary thromboembolism. *Eur J Heart Fail* 2017;19:537-8.
6. Prandoni P, Lensing AW, Prins MH, Ciammaichella M, Perlati M, Mumoli N, et al. Prevalence of pulmonary embolism among patients hospitalized for syncope. *N Engl J Med* 2016;375:1524-31.
7. Elias A, Mallett S, Daoud-Elias M, Poggi JN, Clarke M. Prognostic models in acute pulmonary embolism: A systematic review and meta-analysis. *BMJ Open* 2016;6:e010324.
8. Barco S, Ende-Verhaar YM, Becattini C, Jimenez D, Lankeit M, Huisman MV, et al. Differential impact of syncope on the prognosis of patients with acute pulmonary embolism: A systematic review and meta-analysis. *Eur Heart J* 2018;39:4186-95.
9. Qanadli SD, El Hajjam M, Vieillard-Baron A, Joseph T, Mesurrolle B, Oliva VL, et al. New CT index to quantify arterial obstruction in pulmonary embolism: Comparison with angiographic index and echocardiography. *AJR Am J Roentgenol* 2001;176:1415-20.
10. Brignole M, Moya A, de Lange FJ, Deharo JC, Elliott PM, Fanciulli A, et al. 2018 ESC Guidelines for the diagnosis and management of syncope. *Eur Heart J* 2018;39:1883-948.
11. Kaymaz C, Akbal OY, Hakgor A, Tokgoz HC, Karagoz A, Tanboga IH, et al. A five-year, single-centre experience on ultrasound-assisted, catheter-directed thrombolysis in patients with pulmonary embolism at high risk and intermediate to high risk. *EuroIntervention* 2018;14:1136-43.
12. Mohebbali D, Heidinger BH, Feldman SA, Matos JD, Dabreo D, McCormick I, et al. Right ventricular strain in patients with pulmonary embolism and syncope. *J Thromb Thrombolysis* 2020;50:157-64.
13. Task Force for the Diagnosis and Management of Syncope; European Society of Cardiology (ESC); European Heart Rhythm Association (EHRA); Heart Failure Association (HFA); Heart Rhythm Society (HRS), Moya A, Sutton R, Ammirati F, Blanc JJ, Brignole M, Dahm JB, et al. Guidelines for the diagnosis and management of syncope (version 2009). *Eur Heart J* 2009;30:2631-71.
14. de Winter MA, van Bergen EDP, Welsing PMJ, Kraaijeveld AO, Kaasjager KHAH, Nijkeuter M. The prognostic value of syncope on mortality in patients with pulmonary embolism: A systematic review and meta-analysis. *Ann Emerg Med* 2020;76:527-41.
15. Ploesteanu RL, Nechita AC, Andrucovici S, Delcea C, Mihule EM, Gae D, et al. Is syncope a predictor of mortality in acute pulmonary embolism? *J Med Life* 2019;12:15-20.
16. Lee YH, Cha SI, Shin KM, Lim JK, Yoo SS, Lee SY, et al. Clinical relevance of syncope in patients with pulmonary embolism. *Thromb Res* 2018;164:85-9.
17. Altınsoy B, Erboy F, Tanrıverdi H, Uygur F, Örnek T, Atalay F, et al. Syncope as a presentation of acute pulmonary embolism. *Ther Clin Risk Manag* 2016;12:1023-8.
18. Berghaus TM, Haeckel T, Behr W, Wehler M, von Scheidt W, Schwaiblmair M. Central thromboembolism is a possible predictor of right heart dysfunction in normotensive patients with acute pulmonary embolism. *Thromb Res* 2010;126:e201-5.
19. Calvo-Romero JM, Pérez-Miranda M, Bureo-Dacal P. Syncope in acute pulmonary embolism. *Eur J Emerg Med* 2004;11:208-9.
20. Casazza F, Becattini C, Bongarzone A, Cuccia C, Ronconi L, Favretto G, et al. Clinical features and short term outcomes of patients with acute pulmonary embolism. The Italian Pulmonary Embolism Registry (IPER). *Thromb Res* 2012;130:847-52.
21. Castelli R, Tarsia P, Tantardini C, Pantaleo G, Guariglia A, Porro F. Syncope in patients with pulmonary embolism: Comparison between patients with syncope as the presenting symptom of pulmonary embolism and patients with pulmonary embolism without syncope. *Vasc Med* 2003;8:257-61.
22. Duplyakov D, Kurakina E, Pavlova T, Khokhlov S, Surkova E. Value of syncope in patients with high-to-intermediate risk pulmonary artery embolism. *Eur Heart J Acute Cardiovasc Care* 2015;4:353-8.

23. Martinez Licha CR, McCurdy CM, Maldonado SM, Lee LS. Current management of acute pulmonary embolism. *Ann Thorac Cardiovasc Surg* 2020;26:65-71.
24. Deas DS, Keeling B. Surgical pulmonary embolectomy. *Crit Care Clin* 2020;36:497-504.